

Service Manual

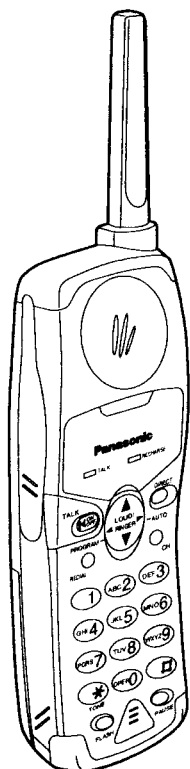
Telephone Equipment

2.4GHz Cordless Phone

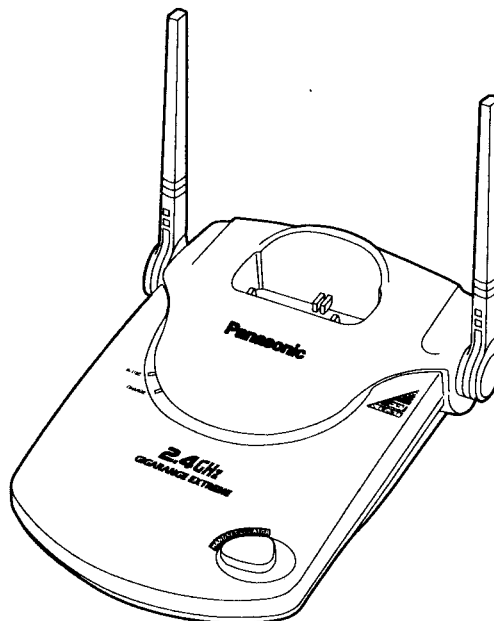
KX-TG2500B KX-TG2500S



2.4GHz
GIGARANGE EXTREME



(Handset)



(Base Unit)

Black Version

Silver Version

(for U.S.A.)

■ SPECIFICATIONS

	Base Unit	Handset
Power Source:	AC Adaptor (PQLV1Z)	Rechargeable Ni-MH battery
Receiving Frequency:	25 channels within 904.56~925.04 MHz	25 channels within 2.40616~2.47784 GHz
Receiving Method:	Double super heterodyne	Double super heterodyne
Transmitting Frequency:	25 channels within 2.40616~2.47784 GHz	25 channels within 904.56~925.04 MHz
Oscillation Method:	PLL synthesizer	PLL synthesizer
Detecting Method:	Quadrature Discriminator	Quadrature Discriminator
Tolerance of OSC Frequency:	± 3.6 kHz	± 3.6 kHz
Modulation Method:	F3 (frequency modulation)	F3 (frequency modulation)
ID Code:	20-bit	20-bit
Dial Mode:		Tone (DTMF)/Pulse
Directory:		Up to 22 digits
Power Consumption:		14 days at Standby, 3~9 hours at Talk
Dimension (H×W×D):	2 ²⁷ / ₃₂ " × 6 ³ / ₈ " × 8 ³ / ₃₂ " (72 × 162 × 180 mm)	8 ³¹ / ₃₂ " × 2 ⁹ / ₃₂ " × 1 ³ / ₈ " (228 × 58 × 35 mm)
Weight	0.88 lbs. (400 g)	0.51 lbs. (230g) with battery

Design and specifications are subject to change without notice.

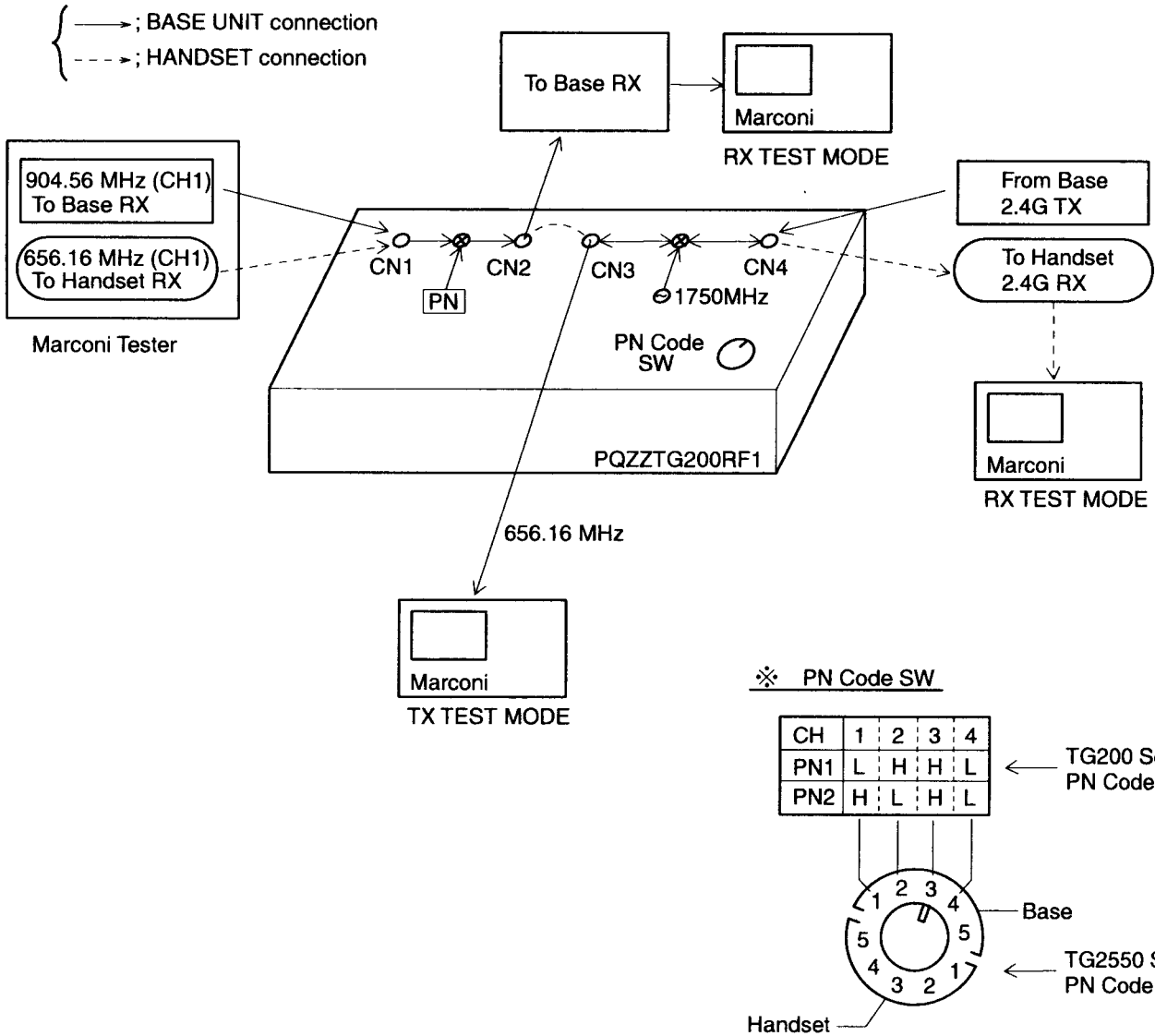
Panasonic

©1999 Kyushu Matsushita Electric Co., Ltd.
All rights reserved. Unauthorized copying and distribution is a violation of law.

TEST MODE SETTING

■ KX-TG2500B/KX-TG2500S Test Equipment (PQZZTG200RF1)

1. Set PN code (refer to Frequency Table) by PN code SW below.
When you think that you want to set Test Mode on CH8, you have to set PN code 3.
2. Power on
3. Connect to other Equipments.



• CN3 and CN4 compose down convertor.
 (CN3 Output Signal Frequency) = (CN4 Input Signal Frequency) - 1750MHz

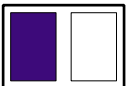
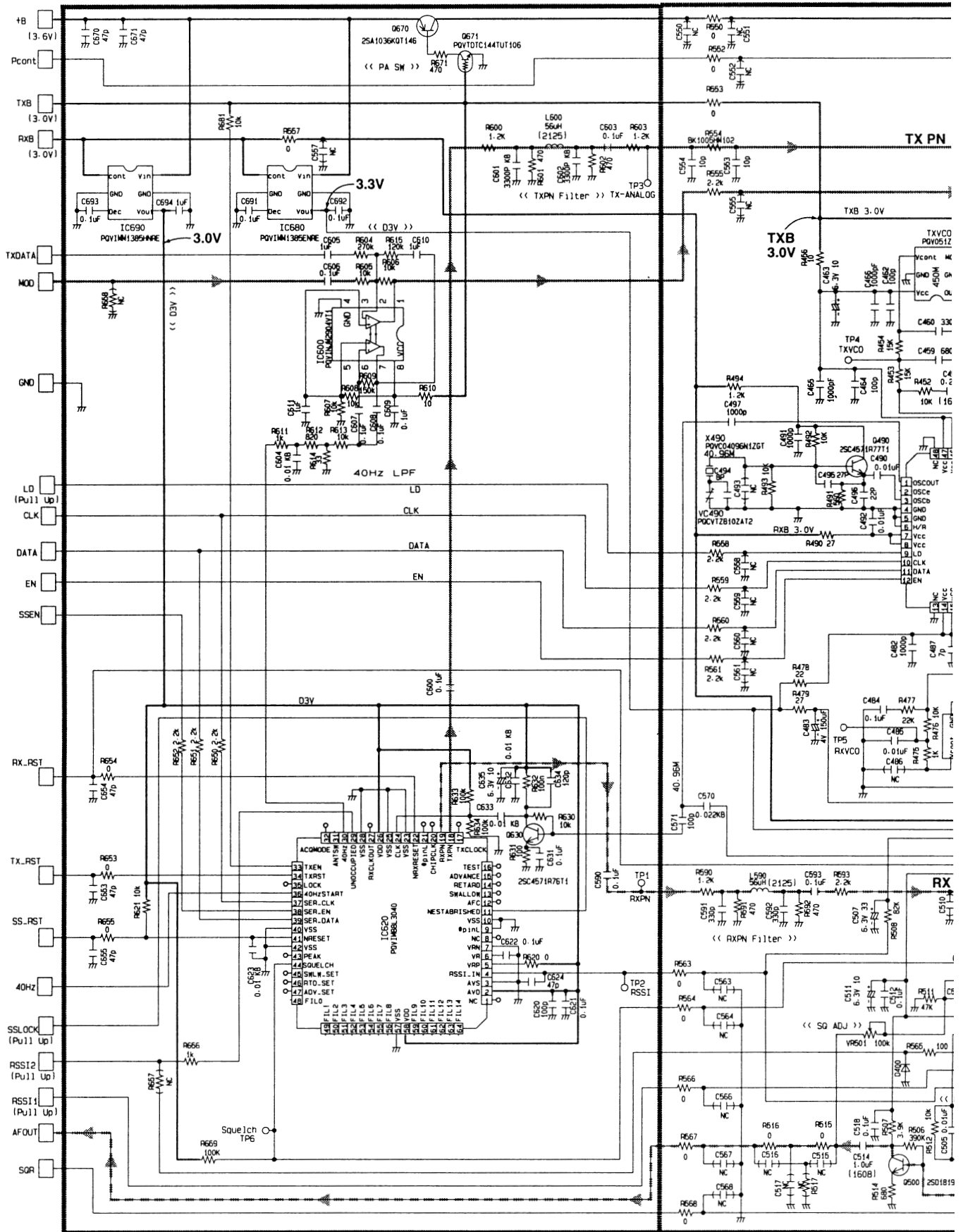
< for example >

CN4 CN5 CN3
 2406.160 MHz - 1750.0 MHz = 656.160 MHz
 (CH1)

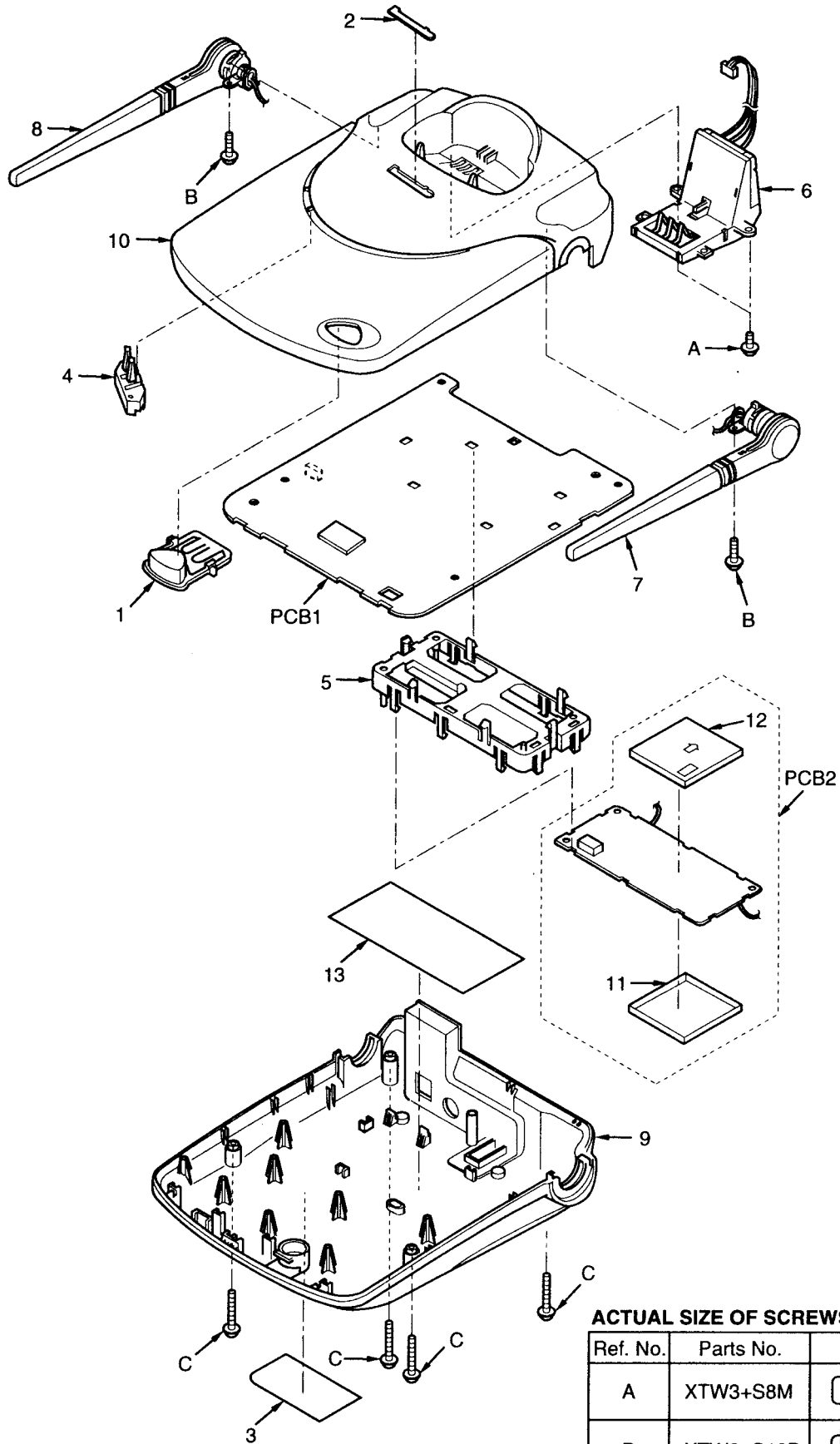
SCHEMATIC DIAGR

1 2 3 4 5 6

A
B
C
D
E
F
G
H



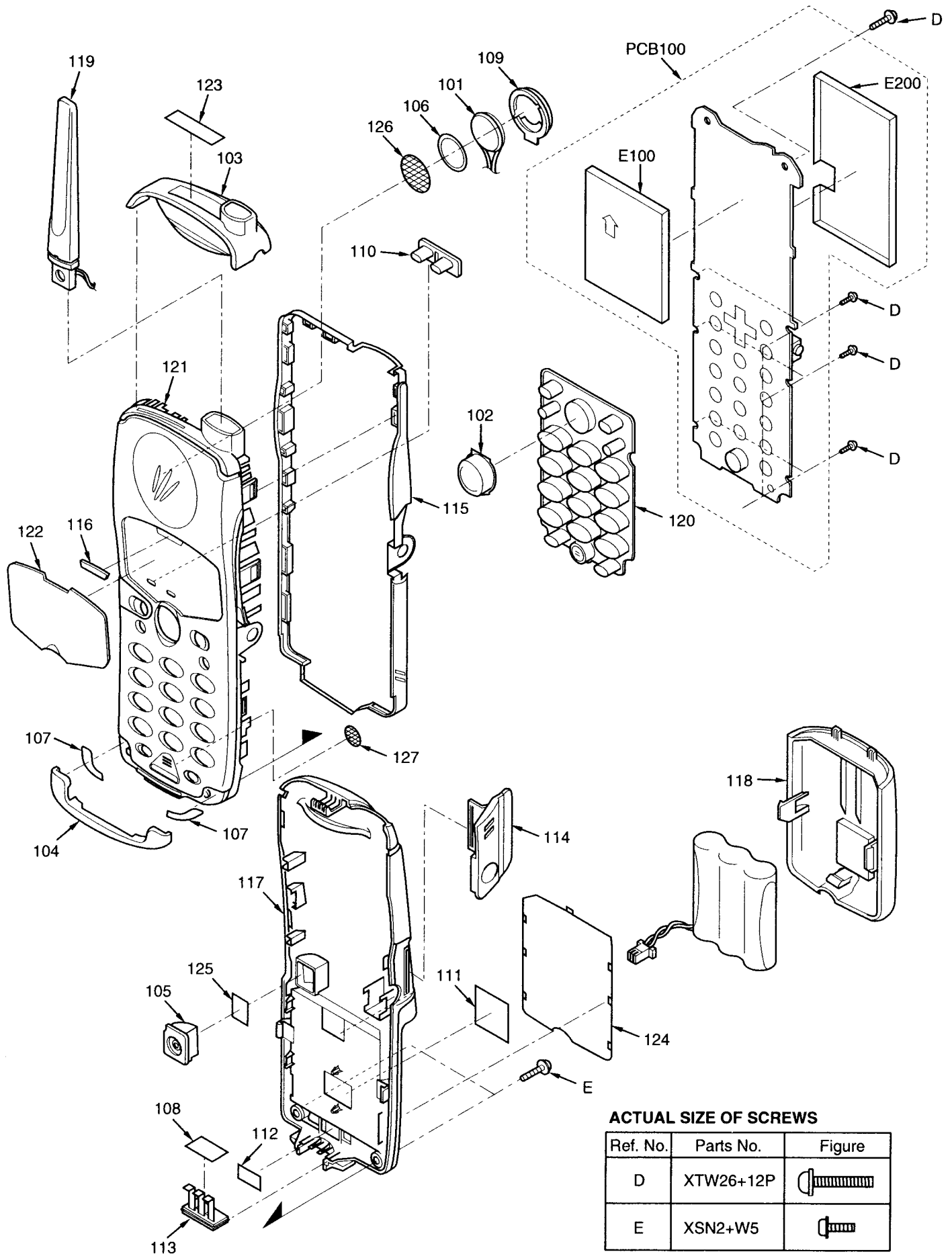
CABINET AND ELECTRICAL PARTS LOCATION (Base Unit)



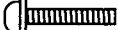
ACTUAL SIZE OF SCREWS

Ref. No.	Parts No.	Figure
A	XTW3+S8M	
B	XTW3+S10P	
C	XTW3+S14P	

CABINET AND ELECTRICAL PARTS LOCATION (Handset)



ACTUAL SIZE OF SCREWS

Ref. No.	Parts No.	Figure
D	XTW26+12P	
E	XSN2+W5	